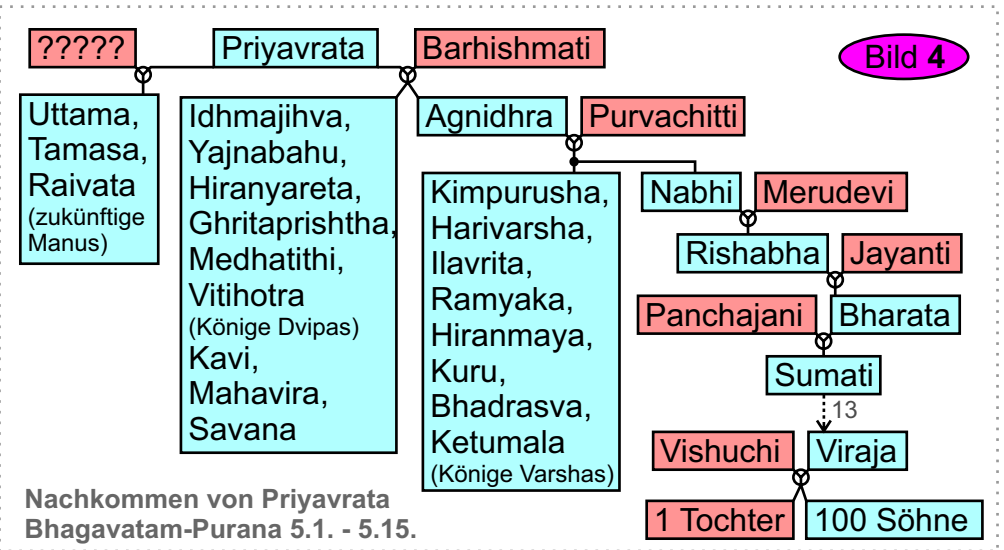
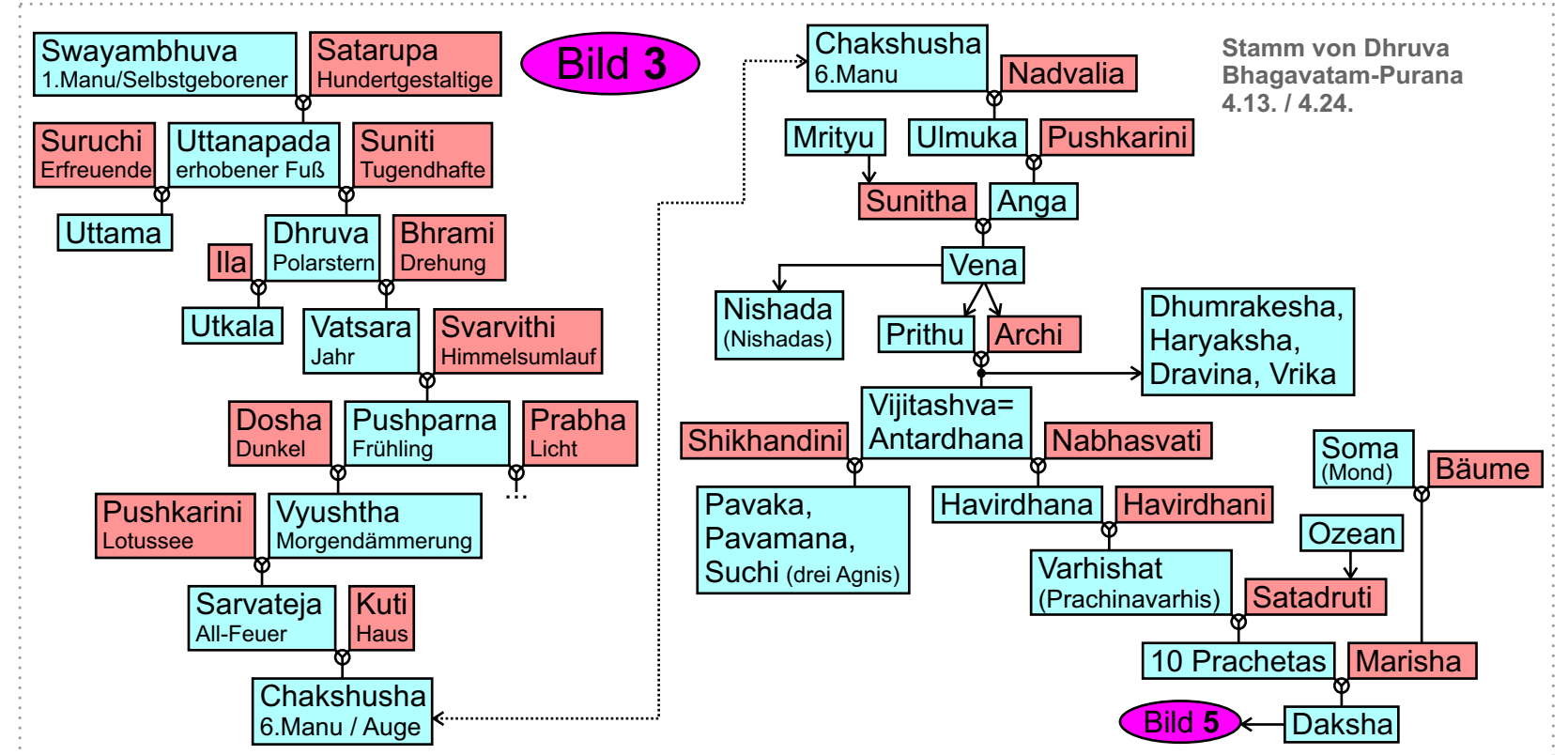
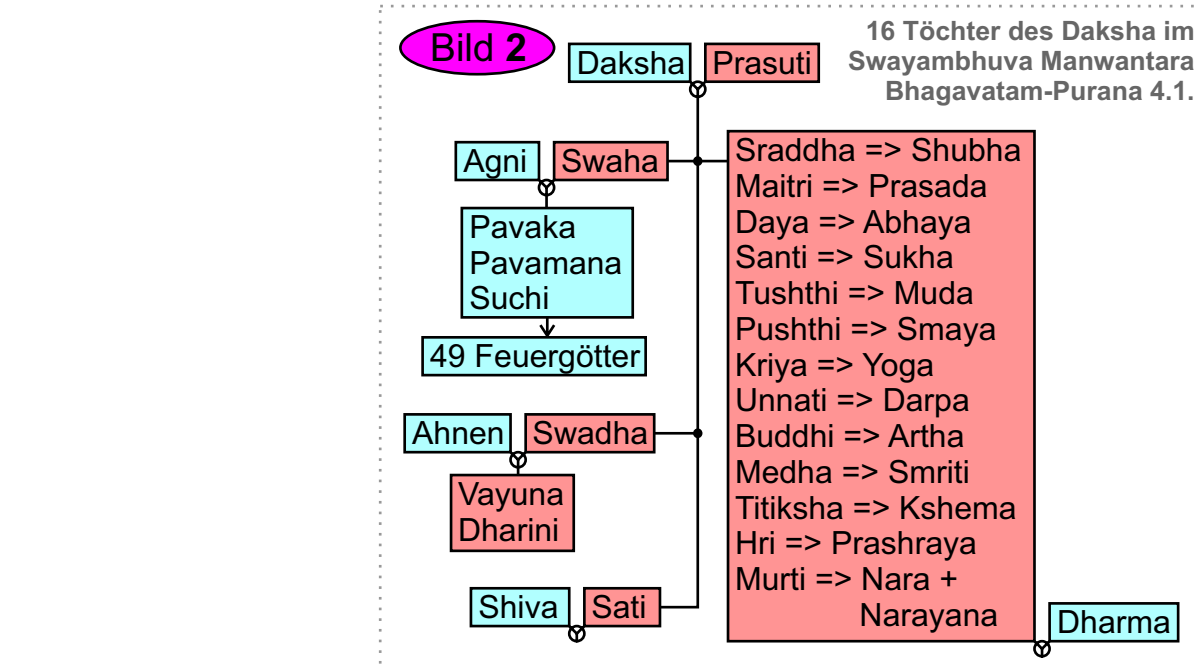
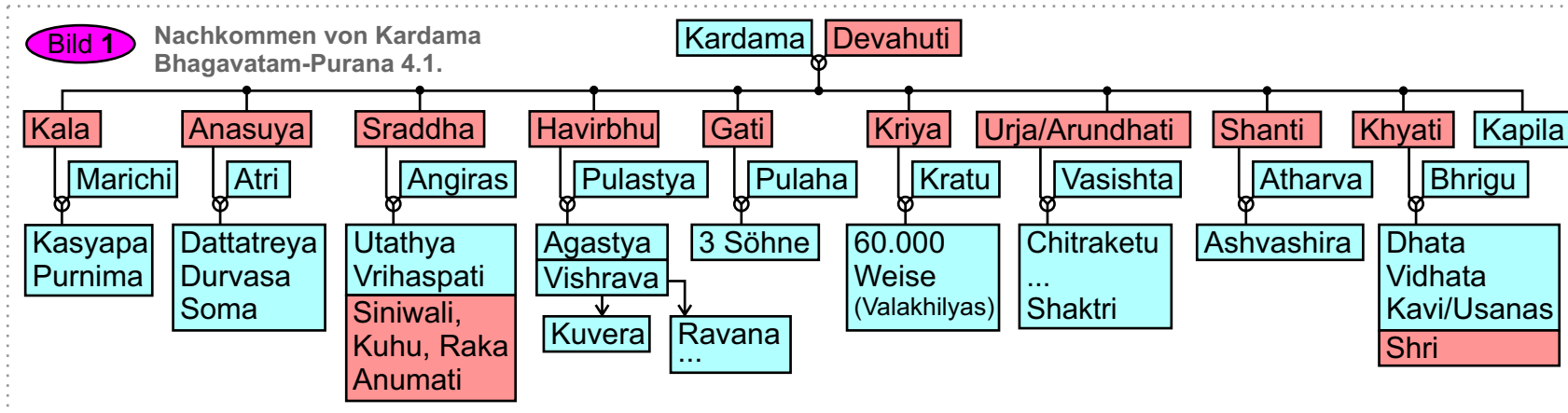
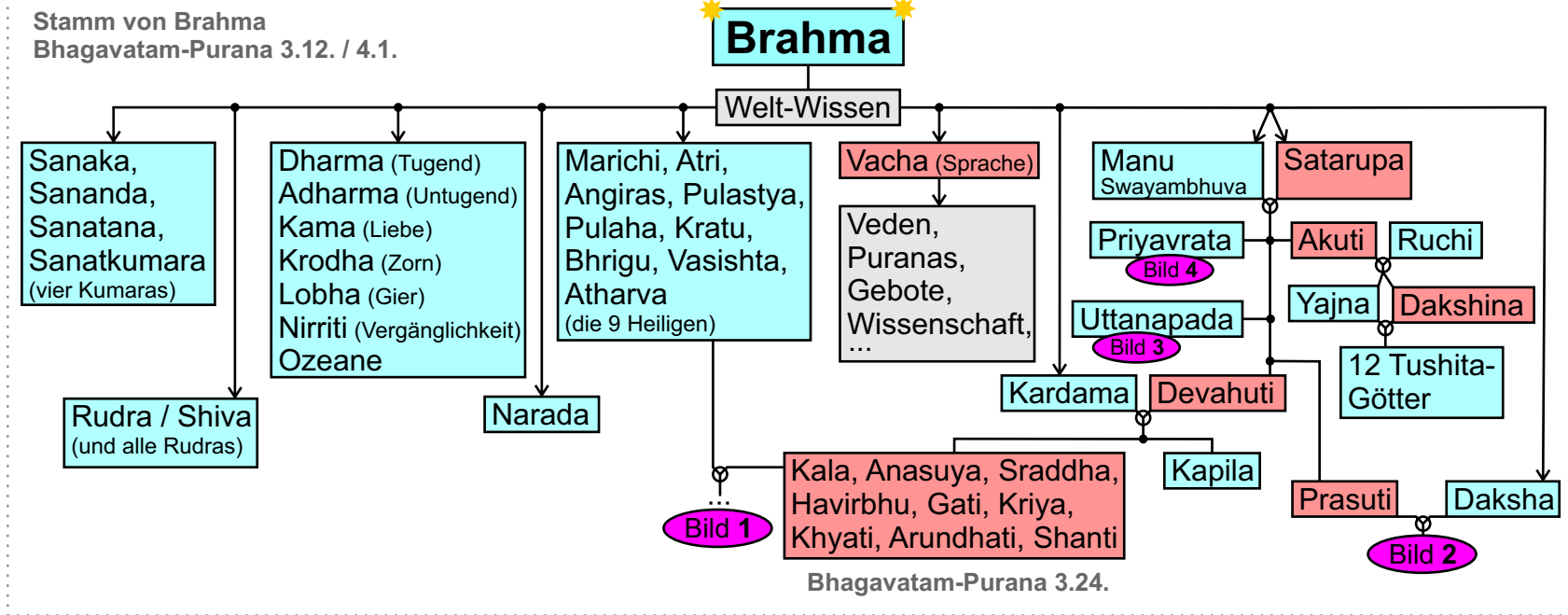


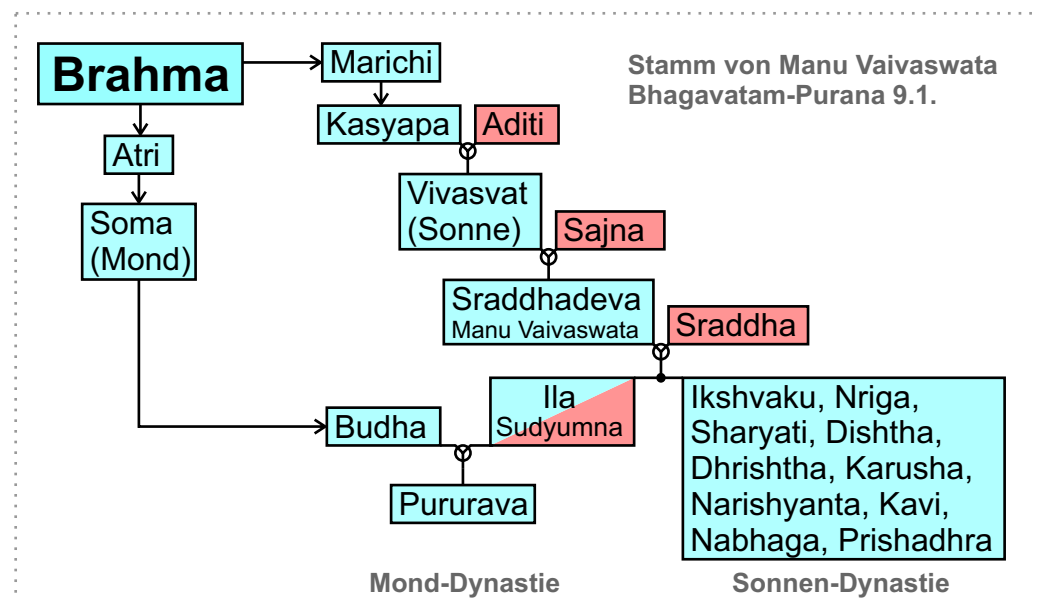
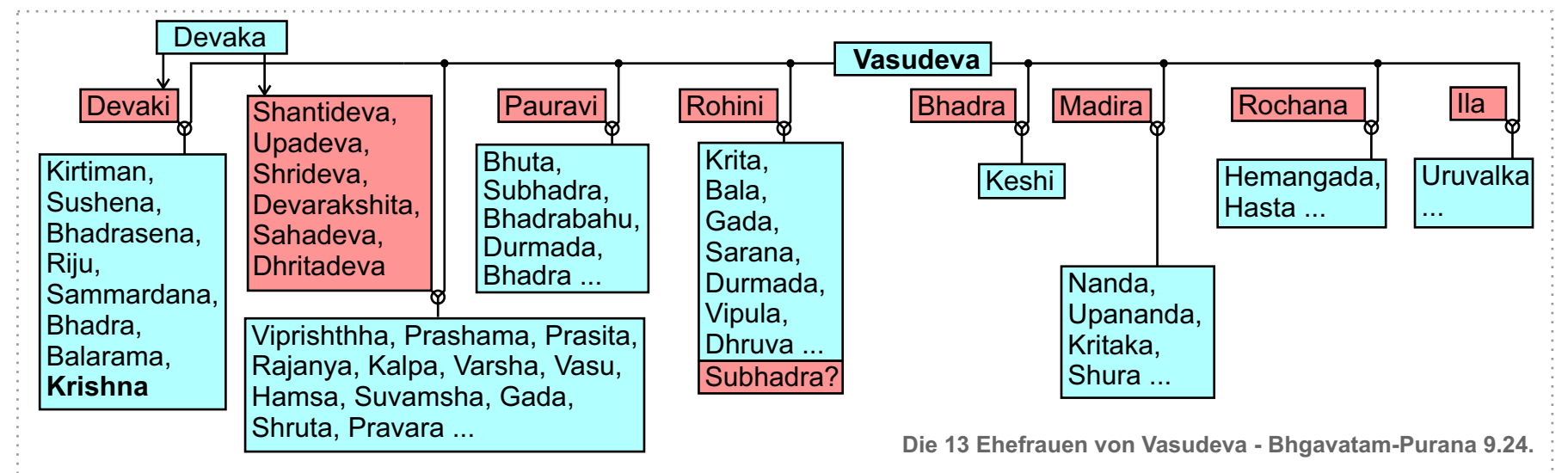
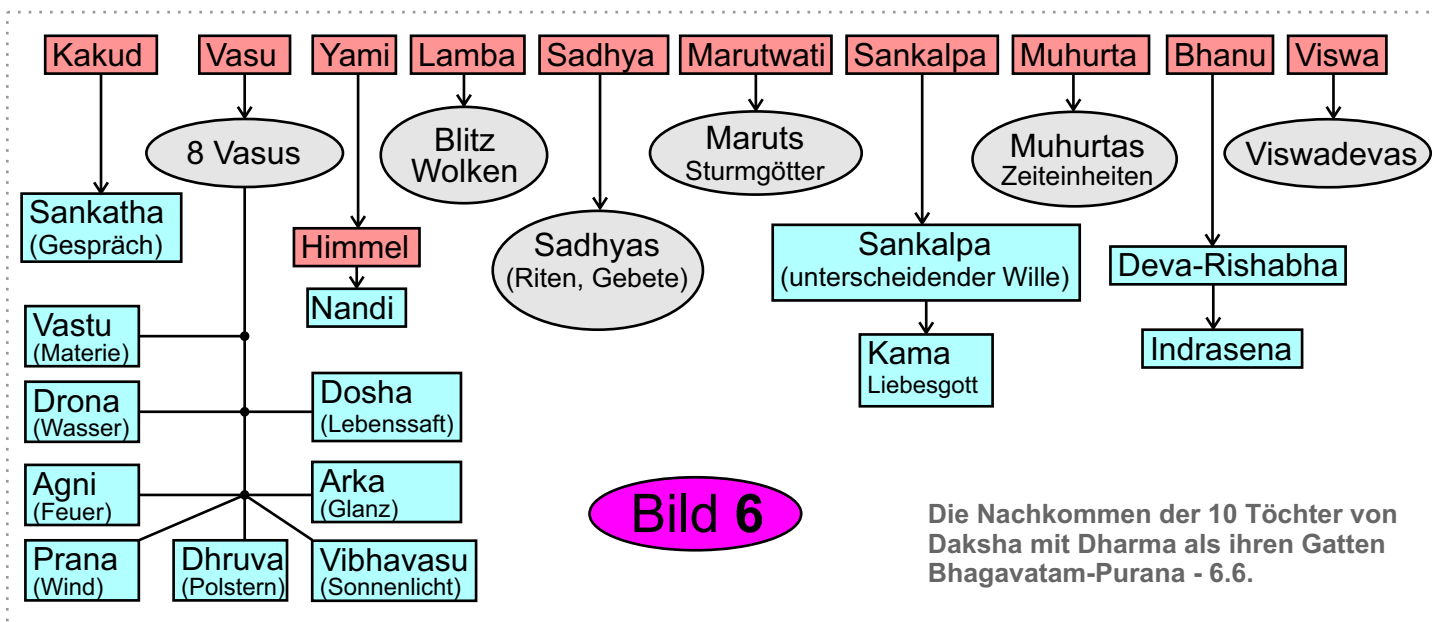
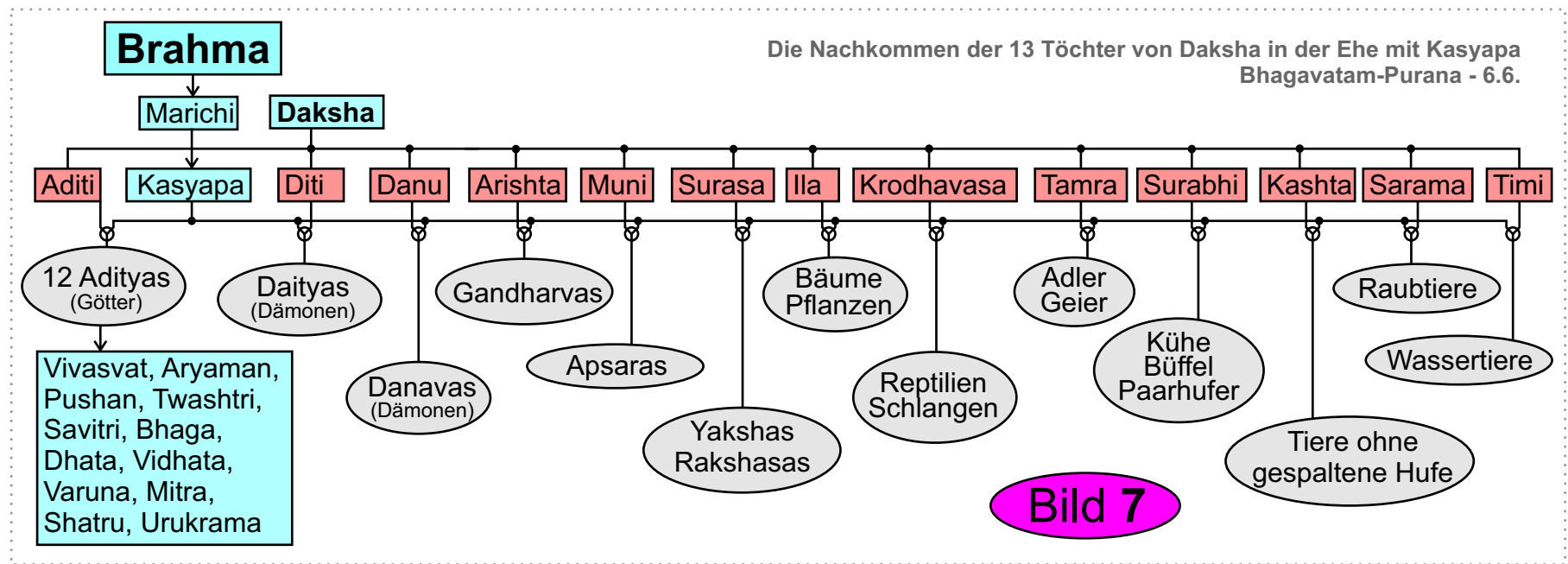
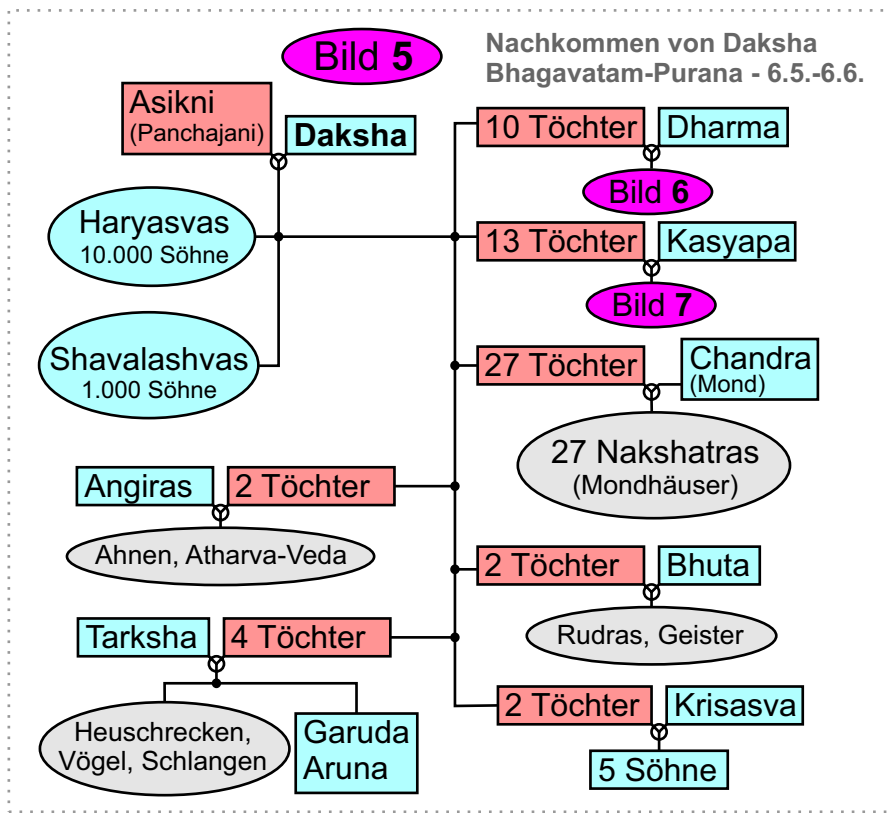
Stammbäume zum Shrimad-Bhagavatam-Purana

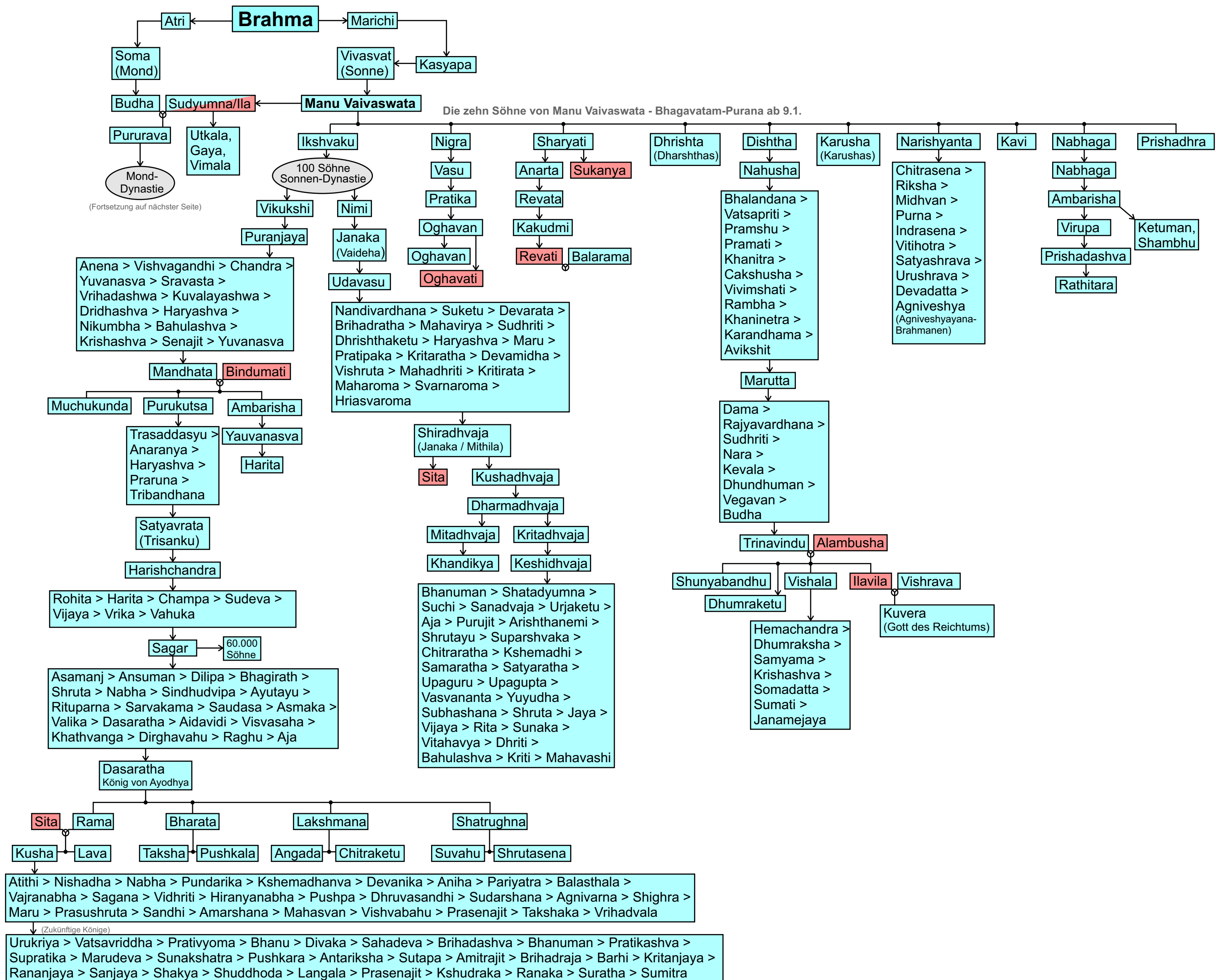


Legende

- weiblich
- männlich
- Ehe/Zeugung
- direkte Abstammung
- Abstammung über mehrere Generationen

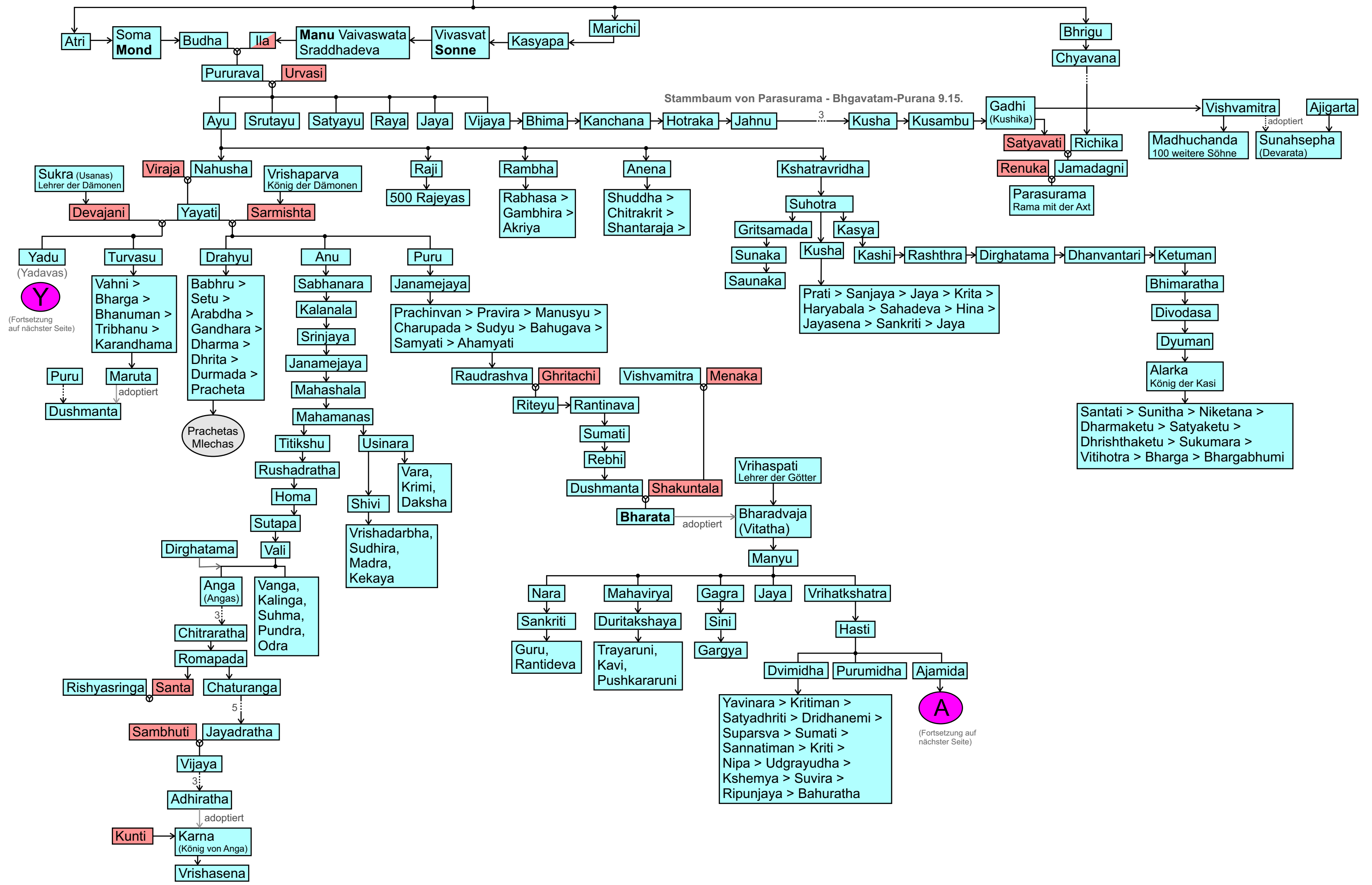
Stand: 24.03.2021 www.pushpak.de





Brahma

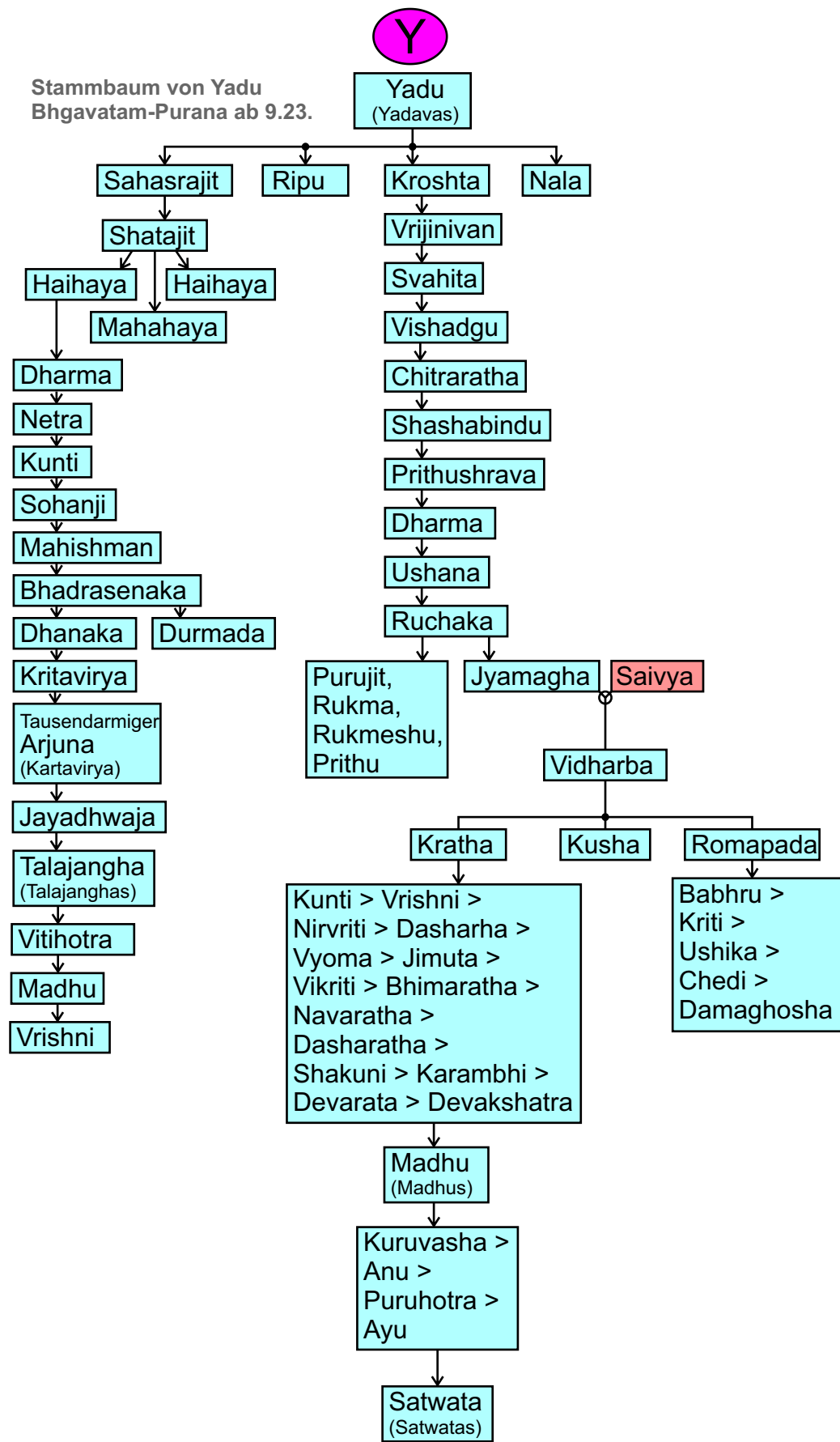
Stammbaum von Parasurama - Bhgavatam-Purana 9.15.



(Fortsetzung auf nächster Seite)

(Fortsetzung auf nächster Seite)

Stammbaum von Yadu
Bhagavatam-Purana ab 9.23.

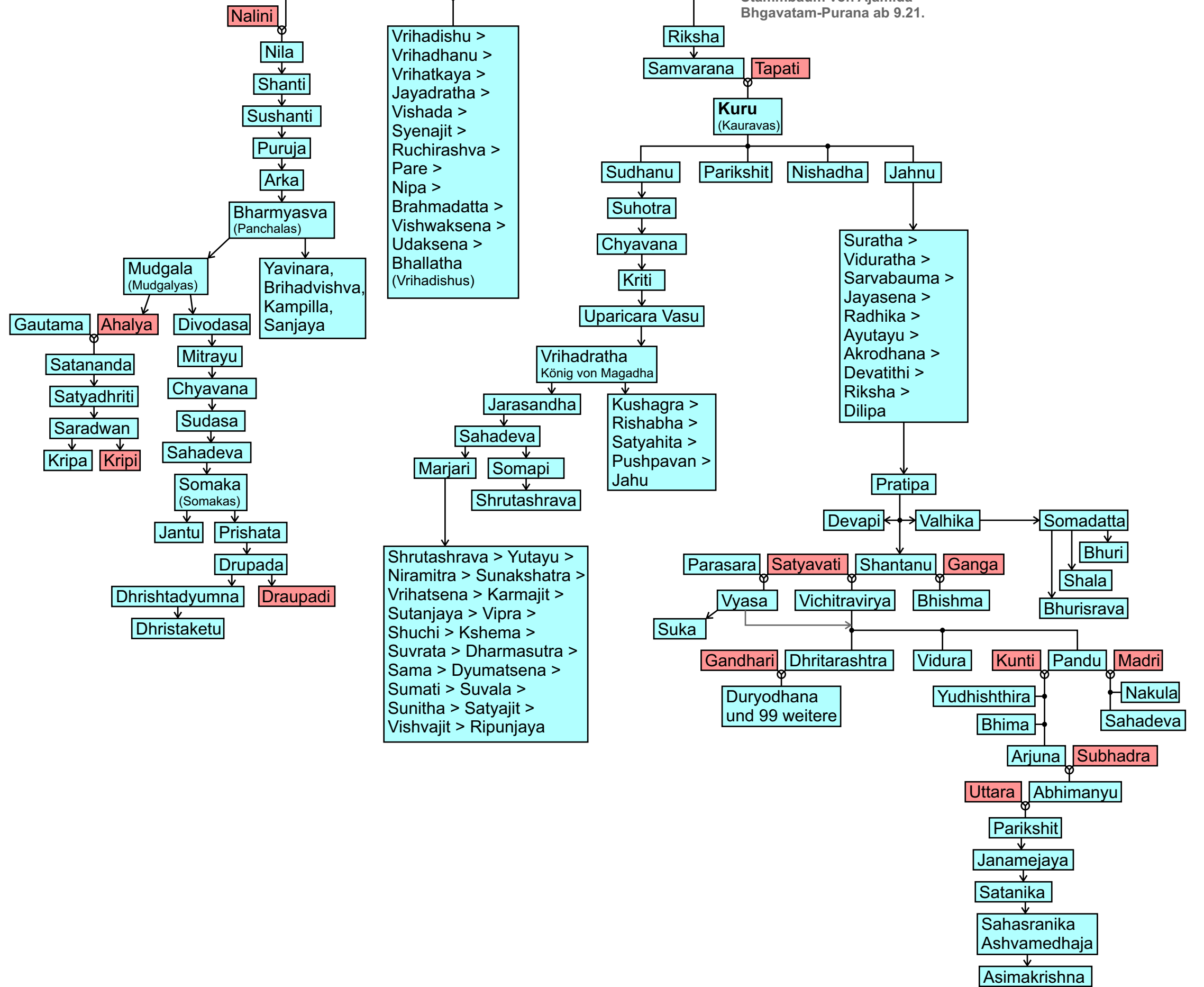


(Fortsetzung auf nächster Seite)

A

Ajamida

Stammbaum von Ajamida
Bhagavatam-Purana ab 9.21.



Nemichakra > Citraratha > Shuciratha > Vrishthiman > Sushena > Sunitha > Nricakshu > Sukhinala > Pariplava > Sunaya > Medhavi > Nripanjaya > Durva > Timi > Vrihadratha > Sudasa > Shatanika > Durdamana > Mahinara > Dandapani > Nimi > Kshemaka

